



## Your secluded hilltop retreat

A gated residential complex situated in the foothills of the Sierra de Las Nieves. The area offers stunning views over the Mediterranean Sea and majestic mountains. On a clear day you can even see the Rock of Gibraltar and the mountains in Morocco from some apartments. The peaceful environment and beautiful location offer the perfect sanctuary from the stresses of everyday life, traffic noise and hustle and bustle.

Despite its tranquil setting, this haven is also close to the exciting Marbella lifestyle, with nights out by its famous Golden Mile beaches, a wide variety of shopping, and leisure activities for all interests and ages. Dip into town centre life whenever you wish, and return to the peace and quiet of your home within minutes. The apartments comprise a spacious and light open-plan living area with large windows, a fitted kitchen, separate laundry room

and two to three bedrooms. All master bedrooms have an en suite bathroom and walk-through wardrobe. There is a separate second bathroom for the other bedroom(s).

The generously proportioned terraces offer a private outdoor space to socialise with family and friends. Some apartments offer multiple terraces so you can enjoy the sun in both the morning and evening.

Attractive communal areas, four outdoor pools, including an infinity pool, and spacious terraces at Hacienda Collection allow you to make the most of the sunny Andalusian climate.

The complex consists of 23 blocks with just over 250 apartments. The entire site is on private land, with the main entrance manned 24/7 for our residents' peace of mind. Every apartment block has a lift, designated parking space, and an additional storage room.

### Pricing

290 000 – 465 000 €

### Bedrooms

2 – 3

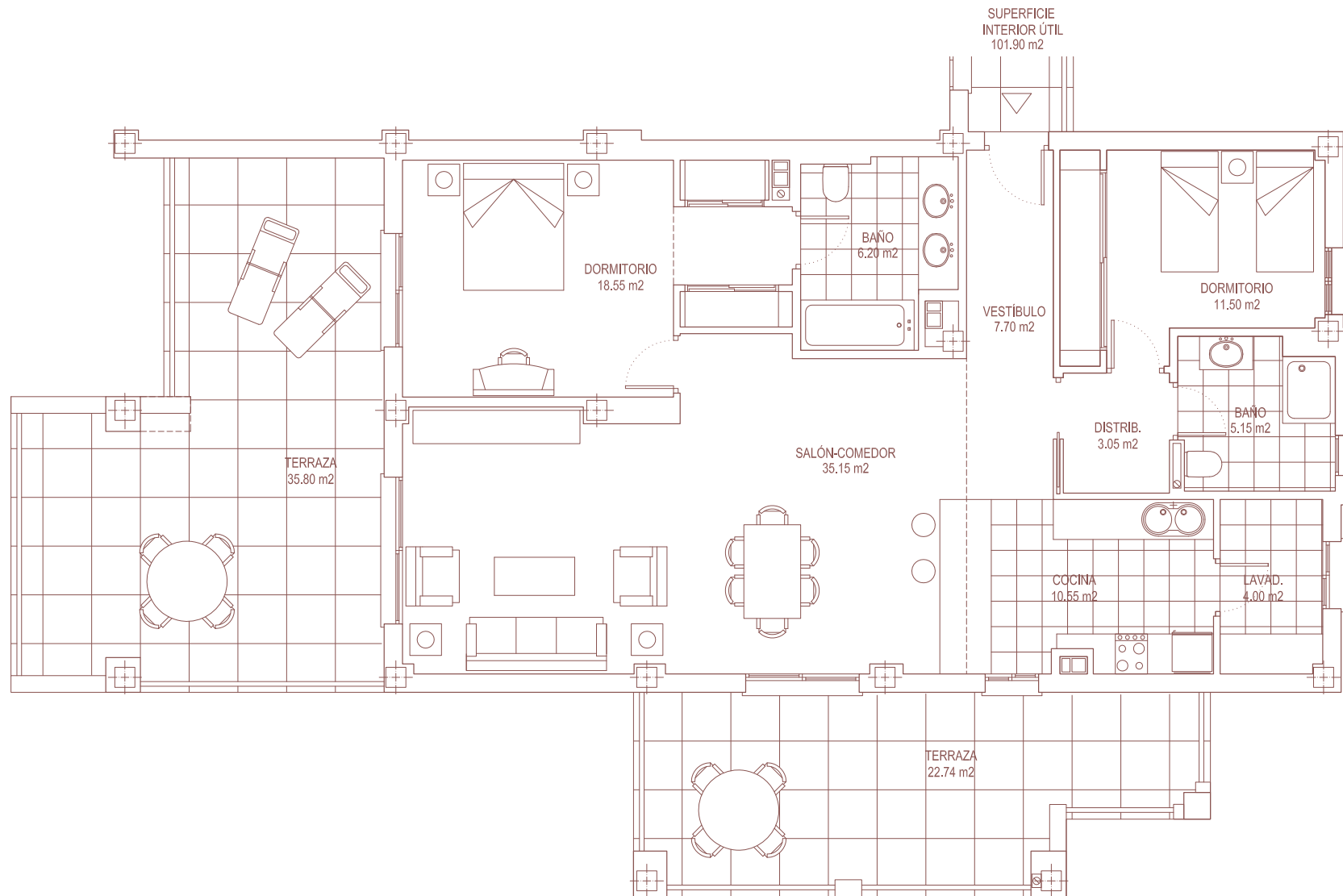
### Built (internal) Terraces

103 – 127 sqm

### Terraces

32 – 78 sqm

*The information given here is subject to error, omissions, modifications, prior sale or withdrawal from the market.*



## Apartment 104 (example)

Apartment No.	Block / Floor / Door	Bedrooms	Orientation	Built (internal)	Terraces
11646	1.1.8	2	Southwest	108,67 sqm	58,10 sqm

*The information given here is subject to error, omissions, modifications, prior sale or withdrawal from the market.*







